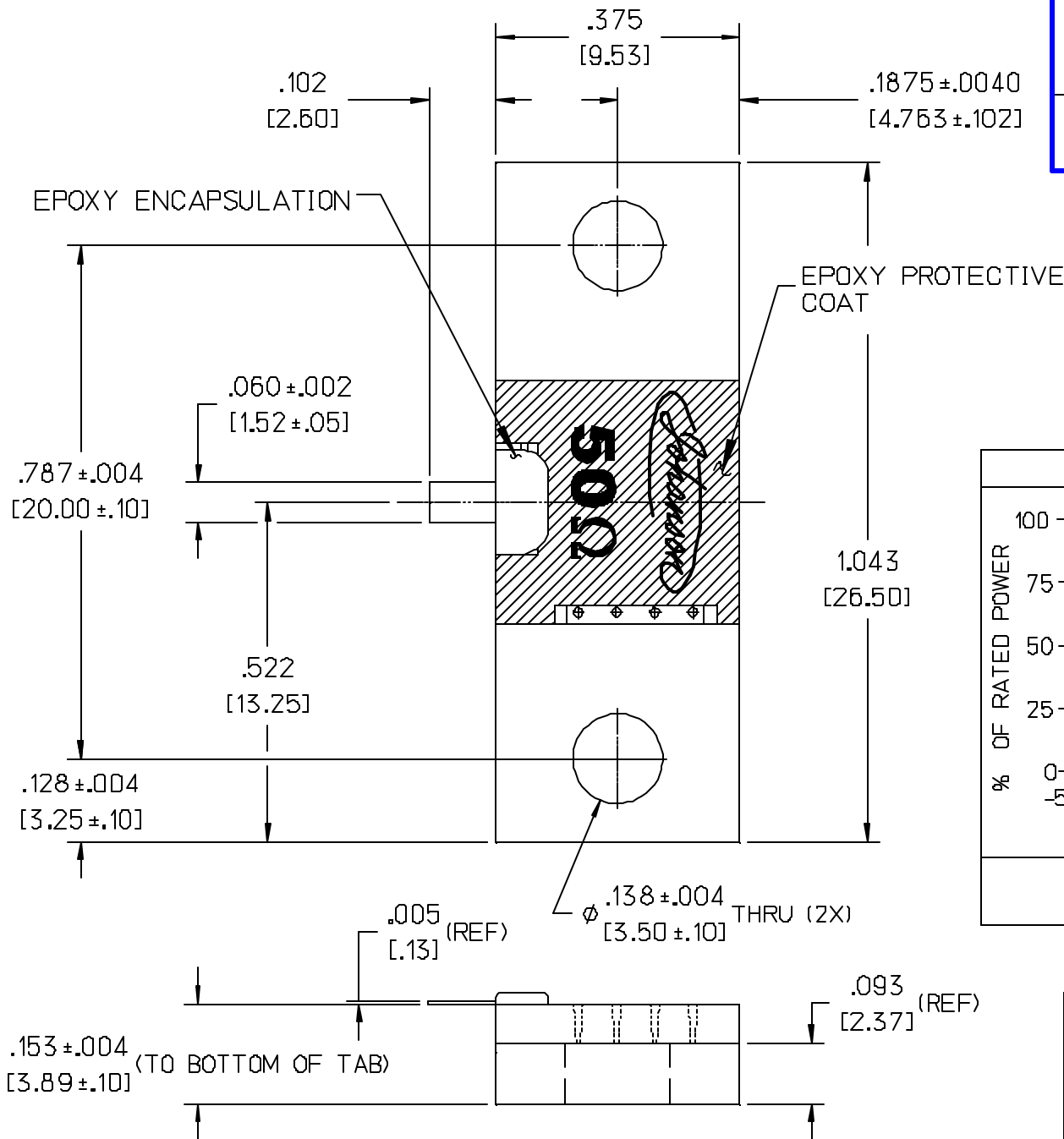


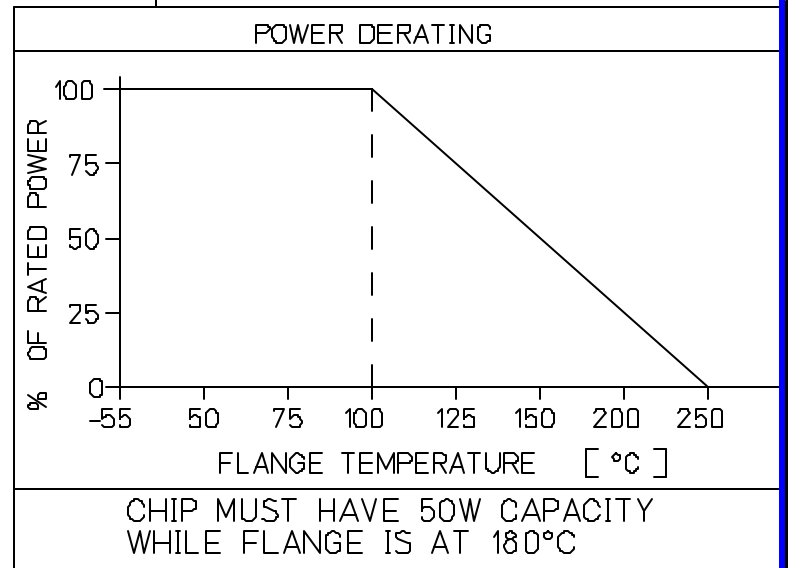
# TF250AB12-549

# C

## HIGH POWER ALN TERMINATION



SPECIFICATIONS		FILE TERMOUT
POWER MAX (WATTS):	250 CW	
RESISTANCE	50 OHMS ± 5%	
FREQUENCY	RETURN LOSS	
DC - 2000MHz	> 35 dB	
DIMENSIONS IN BRACKETS INDICATE [mm]		



LEVEL	DATE	DRN.	CHK.	APP.	ECN
C	07/17/09	SDJ	SDJ	MAI	000781
B	05/20/09	SDJ	SDJ	MAI	000771
A	05/15/09	MAI	-	-	000769

REVISIONS

DRN.	CHK.	APP.	SCALE
MAI	MAI	MAI	4" - 1"
DATE	DATE	DATE	.XX ± .015 [38]
05/15/09	05/15/09	05/15/09	XXX ± .010 [254]



**JOHANSON MANUFACTURING CORPORATION**

ROCKAWAY VALLEY ROAD, BOONTON, N.J. 07005 (973)534-2676 FAX (973)534-2954  
ELECTRONIC ACCURACY THROUGH MECHANICAL PRECISION