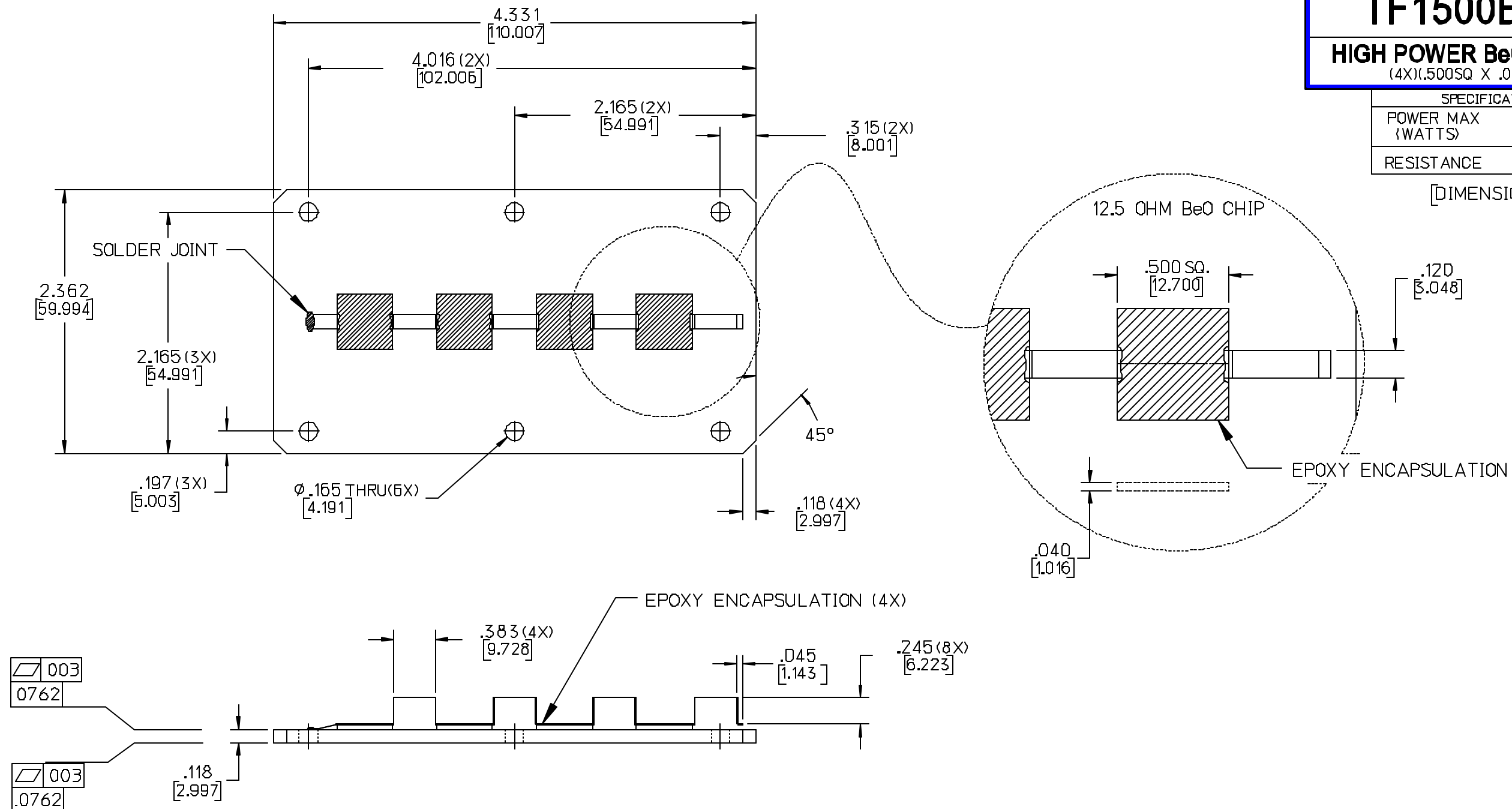


TF1500BB26 A

HIGH POWER BeO TERMINATION (4X).500SQ X .040 THK

SPECIFICATIONS	FILE TERMOUT
POWER MAX (WATTS)	1500 CW
RESISTANCE	50 OHMS (±5%)

[DIMENSIONS IN mm]



CAUTION
THIS SUBSTRATE USES BERYLLIUM OXIDE
USE CARE WHEN HANDLING.
DO NOT SCRATCH OR ABRASIVE
TRIM IN OPEN AREA.

JOHANSON MANUFACTURING CORPORATION
ROCKAWAY VALLEY ROAD, BOONTON, N.J. 07005 (973)334-2676 FAX (973)334-2954
ELECTRONIC ACCURACY THROUGH MECHANICAL PRECISION

PROPRIETARY INFORMATION CONTAINED NOT TO BE USED WITHOUT JOHANSON MANUFACTURING CORPORATION APPROVAL

A	05/05/09	SDJ	-	-	D00763
LEVEL	DATE	DRN.	CHK.	APP.	ECN
REVISIONS					
DRN.	CHK.	APP.	SCALE		
SDJ	MAI	MAI	2" = 1"		
DATE	DATE	DATE	.XX ± .015		
05/05/09	05/07/09	05/07/09	.XXX ± .010		